

Dell™ KM632 Desktop Wireless Keyboard and Mouse

Setup

Keyboard

[Features](#)

[Troubleshooting](#)

[Specifications](#)

Mouse

[Features](#)

[Troubleshooting](#)

[Specifications](#)

Statutory Information

[Warranty](#)

[Regulatory](#)

[Certifications](#)

Information in this document is subject to change without notice.

© 2011 Dell Inc. All rights reserved.

Reproduction of these materials in any manner whatsoever without the written permission of Dell Inc. is strictly forbidden. Trademarks used in this text: Microsoft® and Windows® are registered trademarks of Microsoft Corporation in the United States and/or other countries; Dell™ and the Dell logo are trademarks of Dell Inc.

Other trademarks and trade names may be used in this document to refer to either the entities claiming the marks and names or their products. Dell Inc. disclaims any proprietary interest in trademarks and trade names other than its own.

2011 - 05 Rev. A00

Restrictions and Disclaimers

The information contained in this document, including all instructions, cautions, and regulatory approvals and certifications, is

provided by the supplier and has not been independently verified or tested by Dell. Dell cannot be responsible for damage caused as a result of either following or failing to follow these instructions.

All statements or claims regarding the properties, capabilities, speeds or qualifications of the part referenced in this document are made by the supplier and not by Dell. Dell specifically disclaims knowledge of the accuracy, completeness or substantiation for any such statements. All questions or comments relating to such statements or claims should be directed to the supplier.

Export Regulations

Customer acknowledges that these Products, which may include technology and software, are subject to the customs and export control laws and regulations of the United States ("U.S.") and may also be subject to the customs and export laws and regulations of the country in which the Products are manufactured and/or received. Customer agrees to abide by those laws and regulations. Further, under U.S. law, the Products may not be sold, leased or otherwise transferred to restricted end-users or to restricted countries. In addition, the Products may not be sold, leased or otherwise transferred to, or utilized by an end-user engaged in activities related to weapons of mass destruction, including without limitation, activities related to the design, development, production or use of nuclear weapons, materials, or facilities, missiles or the support of missile projects, and chemical or biological weapons.

Setup: Dell™ KM632 Desktop Wireless Keyboard and Mouse

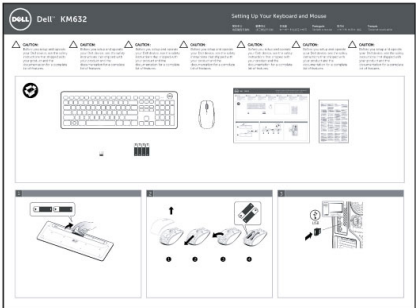
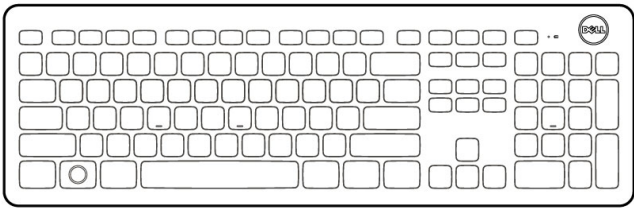
System Requirements

- The following is a list of system requirements:
- One USB port (for the USB Receiver)
 - Microsoft Windows 7/Vista/XP, Media Center Edition and Linux Ubuntu

Getting Started

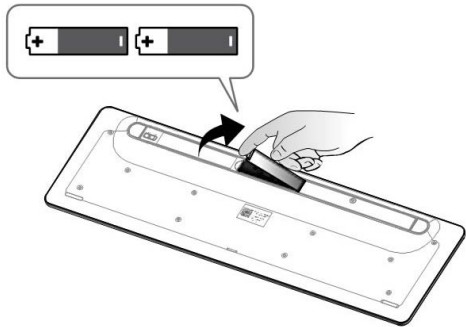
[Contents of the Box](#) • [Setting Up](#) •

Contents of the Box

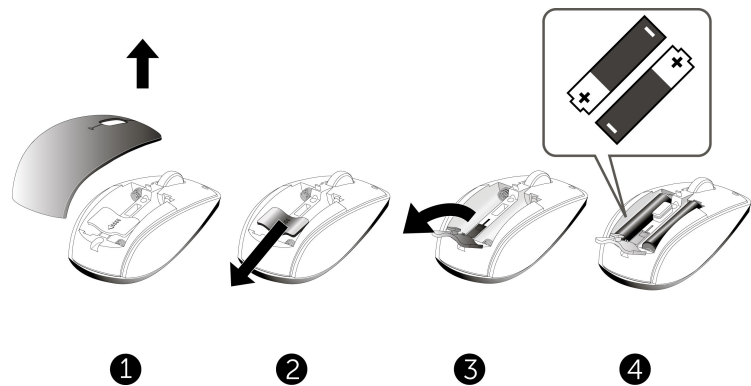


Setting Up

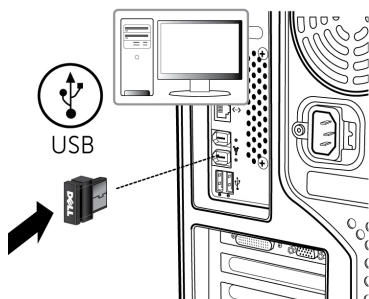
Step 1: Setting up the Keyboard



Step 2: Setting up the Mouse



Step 3: Connect the USB Receiver to Computer



If your keyboard and mouse are NOT working, please refer to [Troubleshooting: Dell™ KM632 Desktop Wireless Keyboard](#) or [Troubleshooting: Dell™ KM632 Desktop Wireless Mouse](#)

Please read all [restrictions and disclaimers](#).

[Back to Contents Page](#)

Features: Dell KM632 Wireless Desktop Wireless Keyboard

[Overview](#) • [Multimedia Functions](#) • [Application Keys and Windows Keys](#) • [On-Screen Display](#) •

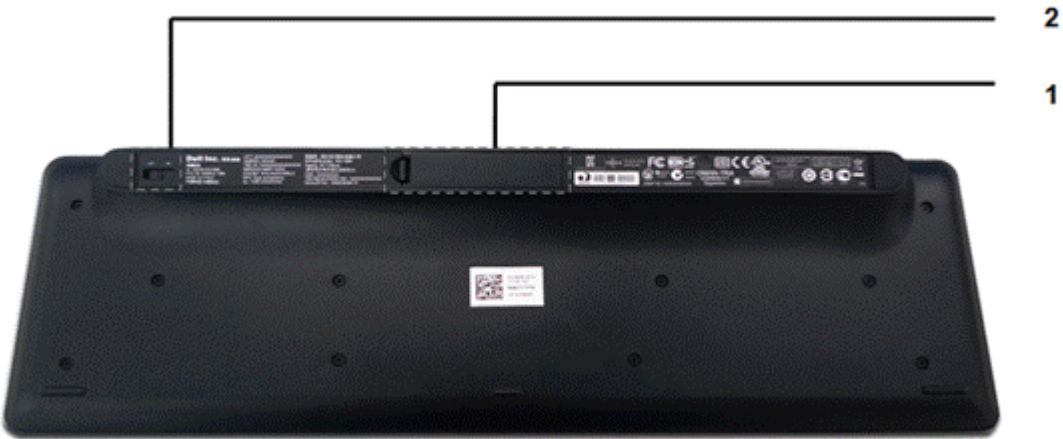
Overview

Dell™ KM632 Desktop Wireless Keyboard Front View



Label	Description/Function
1 Battery Indicator	Green-colored Power Indicator Amber-colored Low Battery Indicator
2 Sleep Key	Press the Sleep key to put computer to Standby Mode. To wake up computer, press any key on the keyboard.
3 Multimedia Functions	Mute, Volume up, Volume down, Play/Pause, Skip forward, Skip backward

Dell™ KM632 Desktop Wireless Keyboard Back View



Label



- 1 Battery Compartment
- 2 On/Off Switch

Multimedia Functions

	Mute the media that is playing
	Volume Down
	Volume Up
	Skips back to



	previous track
	Play/Pause
	Skips forward to next track

Application Keys and Windows Keys

Key Combinations	Function
 Application key	The same shortcut menu as right-clicking the desktop while pressing this key
 Windows key	Start Menu
Windows key + E	Windows Explorer
Windows key + F	Find Document
Windows key + M	Minimize All
Windows key + R	Display Run Dialog box
Windows key + F1	Display Help Menu
Windows key + TAB	Activate next taskbar button
Windows key + Ctrl + F	Find Computer

Windows key + Shift + M	Undo Minimize All
Windows key + Pause/Break	Perform a system function

On-Screen Display

	Caps Lock On
	Caps Lock Off

- Caps Lock — allows the typing of all caps where appropriate, such as titles at the top of a page, without requiring the typist to manually keep the shift key depressed as long as needed.
- If the Caps Lock indicator does not appear on the screen, please download the driver from www.support.dell.com/KM632.

Please read all [restrictions and disclaimers](#).

[Back to Contents Page](#)

Troubleshooting: Dell™ KM632 Desktop Wireless Keyboard

If you have problems with your keyboard:

- Check if the batteries are placed in the correct position.
- Check if the On/Off switch is on.
- After installing the batteries, you will see a green-colored power indicator on the front of the keyboard. The LED will fade off after 15 seconds.
- Remove and insert the USB receiver again.
- If you still have a problem, restart your computer.
- Try the USB Receiver on another USB connector.

Please read all [restrictions and disclaimers](#).

Specifications: Dell™ KM632 Desktop Wireless Keyboard

General • Electrical • Physical • Environmental
• 2.4 GHz Wireless •

General

Manufacturer	Chicony Electronics Co., Ltd.
Model number	KG-1089
Connection type	2.4 GHz Wireless technology
Supported Operating Systems	Microsoft® Windows® 7/Vista/ XP and Media Center Edition and Linux Ubuntu.
Rollover	Pseudo N-key rollover capability
Key mechanism	Rubber dome

Electrical

Operating Voltage	2.0 V to 3.2V
Battery life	approx. 6 months
Battery require	2*AA Alkaline

Physical Characteristics

Height	31.64 mm
Length	444.38 mm