

**Earn BISSELL Rewards!**

Register your  
product today!

See details on  
back page

# **LIFT-Off<sup>®</sup>** **DEEP CLEANER**

## **USER'S GUIDE**

24A4, 30K7, 66E1, 80X9 SERIES

- 2** Thank You
- 3** Safety Instructions
- 4-5** Product View
- 6** Assembly
- 7-12** Operations
- 13-15** Maintenance and Care
- 16** Troubleshooting
- 17** Accessories
- 18** Replacement Parts
- 19** Warranty
- 20** Product Registration
- 20** Consumer Care



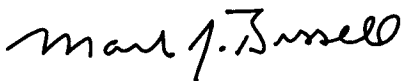
## Thanks for buying a BISSELL Deep Cleaner

We're glad you purchased a BISSELL deep cleaner. Everything we know about floor care went into the innovative design and construction of this complete, high-tech home cleaning system.

Your BISSELL deep cleaner is well made, and we back it with a limited three-year warranty. We also stand behind it with a knowledgeable, dedicated Consumer Care department, so, should you ever have a problem, you'll receive fast, considerate assistance.

My great-grandfather invented the floor sweeper in 1876. Today, BISSELL is a global leader in the design, manufacture, and service of high quality homecare products like your BISSELL deep cleaner.

Thanks again, from all of us at BISSELL.



Mark J. Bissell  
Chairman & CEO

### DETACHABLE INNOVATION

#### Complete Line of BISSELL Lift-Off® Products



Lift-Off®  
Steam Mop



Lift-Off®  
Deep Cleaner



PowerGlide  
Deluxe Pet



Lift-Off®  
Floors & More  
Cordless Stick Vacuum

For more information visit [www.bissell.com](http://www.bissell.com)

# IMPORTANT SAFETY INSTRUCTIONS

When using an electrical appliance, basic precautions should be observed, including the following:

READ ALL INSTRUCTIONS BEFORE USING YOUR DEEP CLEANER.

## **WARNING:** **To reduce the risk of fire, electric shock, or injury:**

- Do not immerse.
- Use only on surfaces moistened by the cleaning process.
- Always connect to a properly grounded outlet.
- See Grounding Instructions.
- Unplug from outlet when not in use and before conducting maintenance or troubleshooting.
- Do not leave machine when it is plugged in.
- Do not service machine when it is plugged in.
- Do not use with damaged cord or plug.
- If appliance is not working as it should, has been dropped, damaged, left outdoors, or dropped into water, have it repaired at an authorized Service Center.
- Do not expose to rain, store indoors.
- Do not pull or carry by cord, use cord as a handle, close door on cord, pull cord around sharp corners or edges, run appliance over cord, or expose cord to heated surfaces.
- Unplug by grasping the plug, not the cord.
- Do not handle plug or appliance with wet hands.
- Do not put any object into appliance openings, use with blocked opening, or restrict air flow.
- Do not expose hair, loose clothing, fingers or body parts to openings or moving parts.
- Do not pick up hot or burning objects.
- Do not pick up flammable or combustible materials (lighter fluid, gasoline, kerosene, etc.) or use in the presence of explosive liquids or vapor.
- Do not use appliance in an enclosed space filled with vapors given off by oil base paint, paint thinner, some moth proofing substances, flammable dust, or other explosive or toxic vapors.
- Do not pick up toxic material (chlorine bleach, ammonia, drain cleaner, gasoline, etc.).
- Do not modify the 3-prong grounded plug.
- Do not allow to be used as a toy.
- Do not use for any purpose other than described in this User's Guide.
- Do not unplug by pulling on the cord.
- Use only manufacturer's recommended attachments.
- Use only cleaning products formulated by BISSELL for use in this appliance to prevent internal component damage. See the cleaning fluid section of this guide.
- Keep openings free of dust, lint, hair, etc.
- Do not point attachment nozzle at people or animals
- Keep appliance on a level surface.
- Turn off all controls before unplugging.
- Unplug before attaching the TurboBrush® Tool.

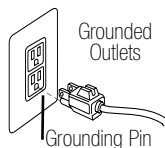
- Be extra careful when cleaning stairs.
- Close attention is necessary when used by or near children.

## **SAVE THESE INSTRUCTIONS.**

THIS MODEL IS FOR HOUSEHOLD USE ONLY.

## **GROUNDING INSTRUCTIONS**

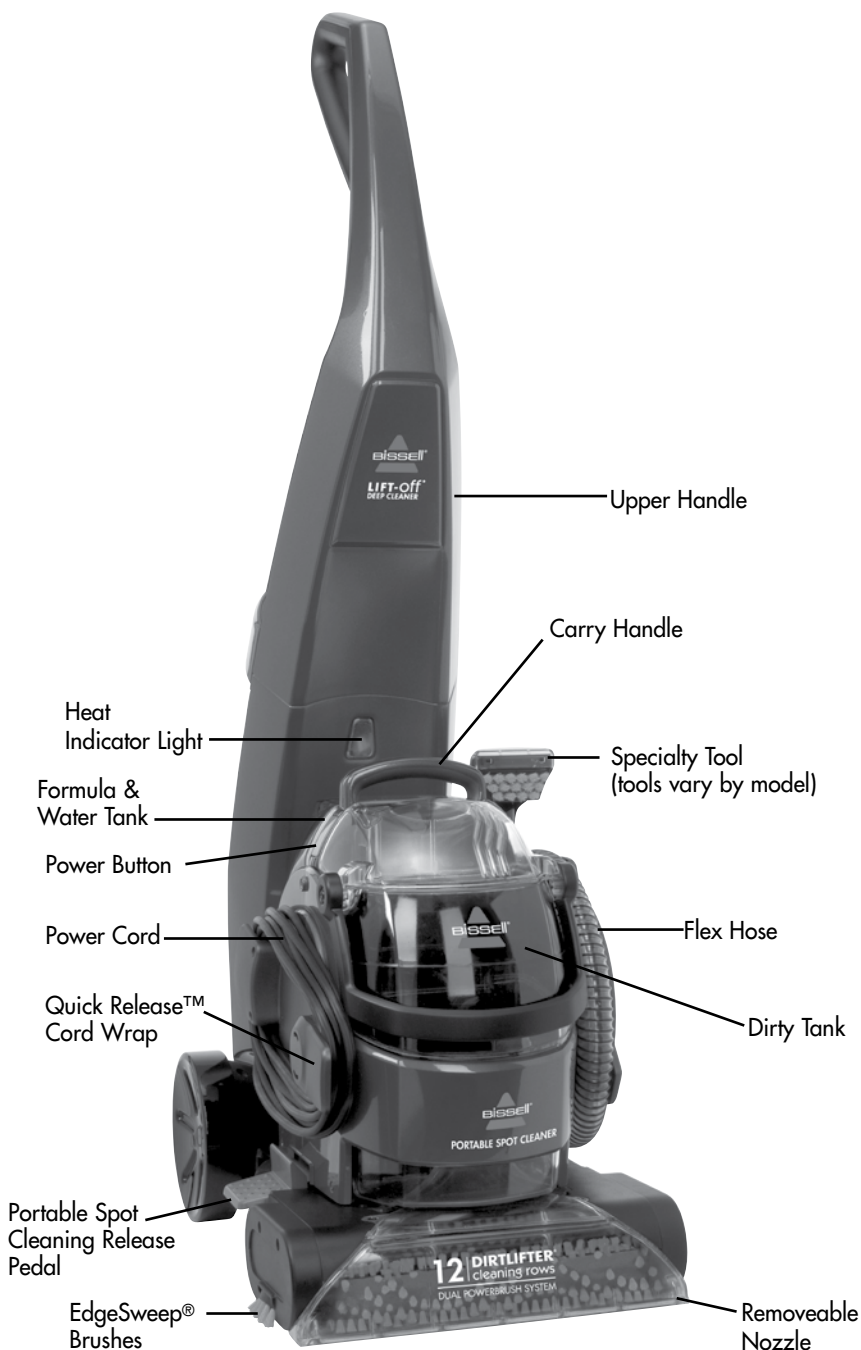
This appliance must be connected to a grounded wiring system. If it should malfunction or break down, grounding provides a safe path of least resistance for electrical current, reducing the risk of electrical shock. The cord for this appliance has an equipment-grounding conductor and a grounding plug. It must only be plugged into an outlet that is properly installed and grounded in accordance with all local codes and ordinances.



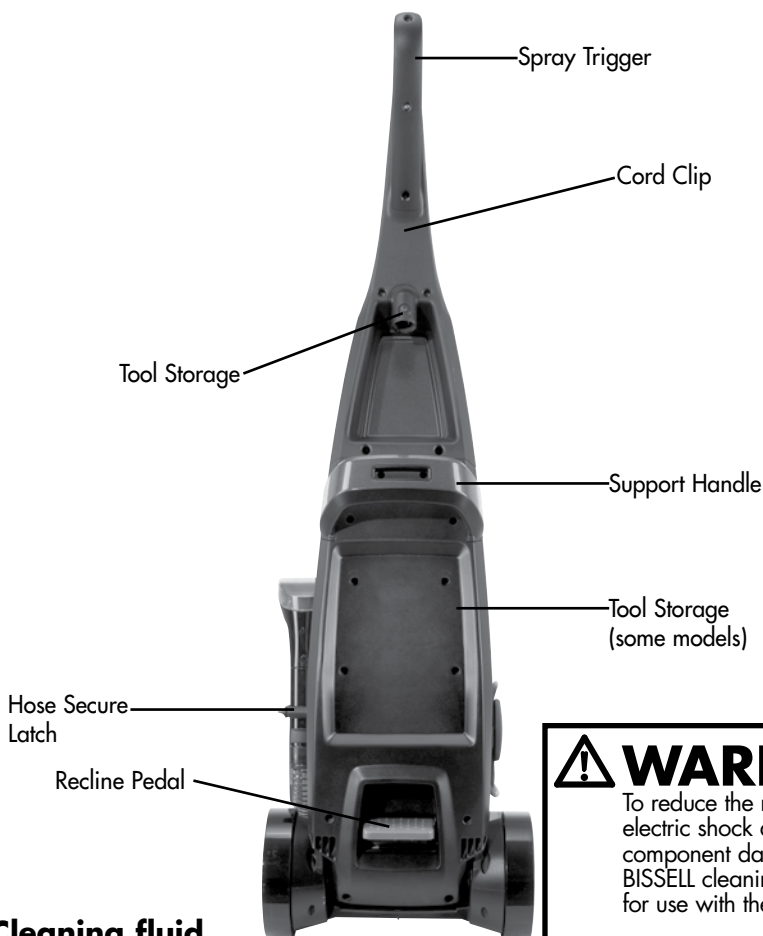
## **WARNING:**

Improper connection of the equipment-grounding conductor can result in a risk of electrical shock. Check with a qualified electrician or service person if you aren't sure if the outlet is properly grounded. **DO NOT MODIFY THE PLUG.** If it will not fit the outlet, have a proper outlet installed by a qualified electrician. This appliance is designed for use on a nominal 120-volt circuit, and has a grounding attachment plug that looks like the plug in the drawing above. Make certain that the appliance is connected to an outlet having the same configuration as the plug. No plug adapter should be used with this appliance.

## Product view



## Product view









## WARNING:

To reduce the risk of fire and electric shock due to internal component damage, use only BISSELL cleaning fluids intended for use with the deep cleaner.

## Cleaning fluid

Keep plenty of genuine BISSELL 2X formula on hand so you can clean and protect whenever it fits your schedule. Always use genuine BISSELL deep cleaning formulas. Non-BISSELL cleaning solutions may harm the machine and will void the warranty.

						
	Professional Deep Cleaning	Pet Stain & Odor	Deep Clean & Protect	Allergen Cleansing	Pet Stain Pretreat	Stain Pretreat
Best for	Out cleans all other formulas	Removes tough pet stains and contains patented odor removal technology	Deep cleans carpets and protects from future stains with Scotchgard® Protector	Helps remove pet & pollen allergens	Pretreat to help remove tough pet stains and odors	Pretreat to penetrate and loosen tough stains
2X Concentrated	X	X	X	X		
Scotchgard® Protection	X	X	X			

# Assembly

**Your deep cleaner comes in two easy to assemble components:**

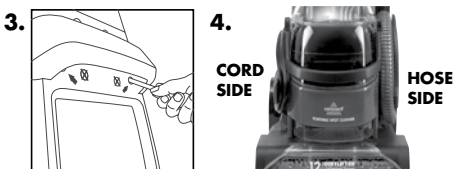
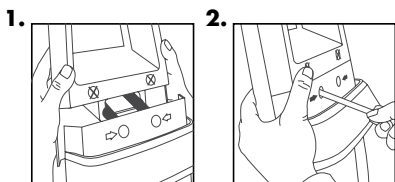
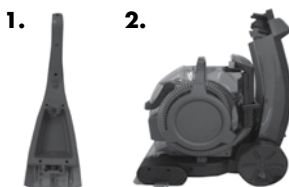
1. Upper handle
2. Portable spot cleaner/Base

**The only tool you will need to assemble your cleaner is a Phillips screwdriver.**

1. Slide the upper handle onto the body of the machine by guiding the 2 posts on the body into the opening on the upper handle.
2. Firmly holding the upper handle in place, screw 2 screws into the marked holes at an upward angle above the support handle.
3. At an upward angle, screw the remaining 2 screws into the marked outermost holes under the support handle.
4. Wrap power cord around Quick Release Cord Wrap.
5. Wrap flex hose around the hose wrap and secure with hose secure latch.
6. Align the product as image 4 shows and firmly push down the portable spot cleaner until it is secured on both sides.
7. Check latches on both sides to confirm it is secured (5).

To further check if the portable spot cleaner is secure, plug in and turn on to verify that the heat indicator light is illuminated. If the heat indicator light does not illuminate, release the pod and re-secure by pushing firmly until both sides snap into place.

8. Snap attachment(s) into the back of unit.  
**NOTE: Portable spot cleaner must be fully secure to operate in the upright mode.**



## **WARNING:**

Do not plug in your cleaner until you have completely assembled it per the above instructions and are familiar with all instructions and operating procedures.

# Operations

## Special features

### Innovative cleaning technology

This innovative deep cleaner offers two machines in one. The upright deep cleaner uses brushes and cleaning formula to maximize cleaning. The portable spot cleaner detaches to clean tough spots and stains and hard to reach areas.

### Heatwave Technology™

This deep cleaner features Heatwave Technology to help maintain the temperature of the hot tap water you put in it to provide constant heat as you clean. Water in the clean tank is heated by heat from the vacuum motor. The Heatwave Technology automatically turns on when you turn the machine on. Heatwave Technology operates in both upright and portable cleaning modes.

### Scotchgard™ Protector

Carpet protection applied at the mill typically wears down over time from heavy foot traffic and everyday cleaning, including deep cleaning. To help restore this important protection, only BISSELL offers deep cleaning formulas with Scotchgard protector. This offers extra protection against dirt and tough stains to keep your carpets looking good longer.

To maintain your carpet's Scotchgard 5-year limited stain warranty, you do not need to hire a professional. By using your BISSELL deep cleaner with BISSELL 2X formulas containing Scotchgard protector every 12 months, your carpet warranty from 3M remains in effect. No other home deep cleaning system can do this for you. Refer to the Scotchgard Protector warranty for details.



**Pedal Graphic**

### Tip:

For easy carrying, grab the carry handle on the portable spot cleaner and balance with the handle on the back of the machine.



# Operations

## Before you clean

1. Move furniture to another area if cleaning an entire room (optional).
2. For best results, vacuum area with a dry vacuum cleaner thoroughly before deep cleaning.
3. Pretreating (optional):
  - 3a. Pretreating is recommended to improve cleaning effectiveness for heavily soiled carpet in high traffic areas such as entryway and hallways.

### 3b. BISSELL Stain PreTreat

Spray the BISSELL Stain PreTreat formula onto heavy traffic areas, soiled areas or stains.

Allow to penetrate for at least 3 minutes.

Clean as normal, using the deep cleaner in upright mode, following the instructions below.

## ATTENTION:

Some Berber carpets have a tendency to fuzz with wear. Repeated strokes in the same area with an ordinary vacuum or deep cleaner may aggravate this condition.



## Upright cleaning mode

### Filling formula & water tank

1. Remove tank from the base of the machine by lifting up tank carry handle.

**NOTE: This tank was designed with a flat bottom so it can be easily filled.**

2. Unscrew the black cap and remove bottle insert.
3. Fill tank with hot tap water to the water fill line. Add two ounces of BISSELL 2X formula to the tank.
4. Replace the bottle insert in the tank and tighten the black cap. Replace the tank on the deep cleaner.



### Cleaning

1. Plug into a proper outlet and press the power button.
2. While pressing the trigger, make one slow forward wet pass and another one back.



# Operations

## Upright cleaning mode continued

### Cleaning continued

3. Release the trigger and make one slow forward and backward pass over the same area. Repeated passes will help aid in dry time.
4. Continue passes until cleaning area is complete.

**NOTE: Your machine may be equipped with a circuit breaker that will automatically shut off the brush if a large or loose object is caught in the brush roll. If that happens, be sure to unplug your machine, remove the foreign object and then plug the machine back in to reset the circuit breaker.**

### Empty dirty tank

1. When the dirty tank reaches the "FULL" line on the tank, it is time to empty.
2. Remove the dirty tank and carry it to a utility sink, toilet or outside (where you will dispose of the dirty water).
3. To unlock the dirty tank lid, rotate the handle over the back of the tank. Remove lid and pour out dirty water. Rinse out the dirty tank to remove any debris.
4. Replace the top of the tank and rotate the handle forward to lock in place on front of tank.
5. Before replacing the tank on the machine, wipe debris from red filter

### Cleaning your machine

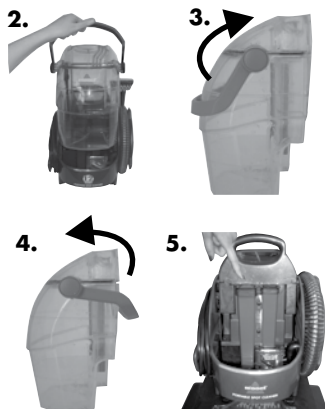
1. Flush out machine of any remaining residual solution.
  - 1a. Fill the formula & water tank with hot tap water and turn on your machine.
  - 1b. Recline handle and press the spray trigger for about 15 seconds while making forward and backward passes on carpet. Continue without pressing the trigger until there is no more water being suctioned up.
  - 1c. Turn off the machine and wrap the powercord. Make sure the dirty tank and the formula & water tank are emptied, rinsed, and dried before the next use.
  - 1d. Before you replace tank, clean all debris from red filter screen.

## CAUTION:

Do not overwet. Take care not to run over loose objects or edges of area rugs. Stalling brush may result in premature belt failure.

## Tip:

Make only one trip to the sink by removing the entire portable cleaner. Fill and empty in the same trip.



## WARNING:

To reduce the risk of fire, electric shock, or injury, turn power OFF and disconnect plug from electrical outlet before performing maintenance or troubleshooting.

## Tip:

For best results, empty, rinse, and dry both tanks before storing.

# Operations

## Upright cleaning mode continued

### Cleaning your machine continued

2. Rinse the front nozzle of any dirt and debris.
  - 2a. Remove the portable spot cleaner from the base of the machine.
  - 2b. Unscrew three screws with Phillips screw driver and remove nozzle.
  - 2c. Rinse the nozzle out at the faucet.
  - 2d. Place the nozzle back onto the machine by hooking the tabs into the holes on the bottom sides of the machine. Secure with screws.
3. The inside of the end caps can be wiped out with a clean paper towel, or, for a more thorough clean, the end caps can be taken off and rinsed clean.
4. Any loose hair or debris can be pulled from the brush rolls and thrown away. For a more thorough clean, follow directions on page 15 for removal of brush rolls. Your machine is now ready to be stored.

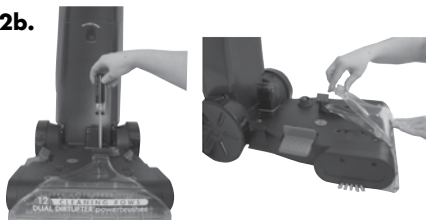
**NOTE: Store cleaner in a protected, dry area. Since this product uses water, it must not be stored where there is a danger of freezing. Freezing will damage internal components and void the warranty.**



### WARNING:

To reduce the risk of fire, electric shock or injury unplug from outlet before servicing.

2b.



### Tip:

Let all parts dry completely and replace onto machine.